

| STATE | PROJECT NO. | YEAR | SHEET NO. | TOTAL SHEETS |
|--------|-------------|------|-----------|--------------|
| KANSAS | 2008-8 | 2010 | 12 | 86 |

Sta. 277+50.00, 34.00' Lt. Install
 4' x 4' Junction Box
 Install 18" x 46' S.S. (RCP)(SE)
 Install 24" x 77' S.S. (RCP)(S)
 with End Section
 Install 24" x 68' S.S. (RCP)(N)
 with End Section

SECRETARY OF TRANSPORTATION
 plate# 800841B

PENDLETON LORITA H TRUSTEE
 plate# 800843

Sta. 282+16.00, 26.50' Lt. Install
 4' x 4' Setback Curb Inlet
 Install 15" x 49' S.S. (RCP)(S)
 Install 15" x 134' S.S. (RCP)(NW)
 with End Section

CURVE DATA
 P.I. Sta. 287+66.57 Bk. -287+36.41 Ahd.
 $\Delta = 39^{\circ}31'30"$ T=377.25'
 R = 1050.00' L=724.33'
 E=65.71'

Sta. 277+99.50, 27.69' Lt. Install
 4' x 4' Setback Curb Inlet
 Install 15" x 52' S.S. (RCP)(S)

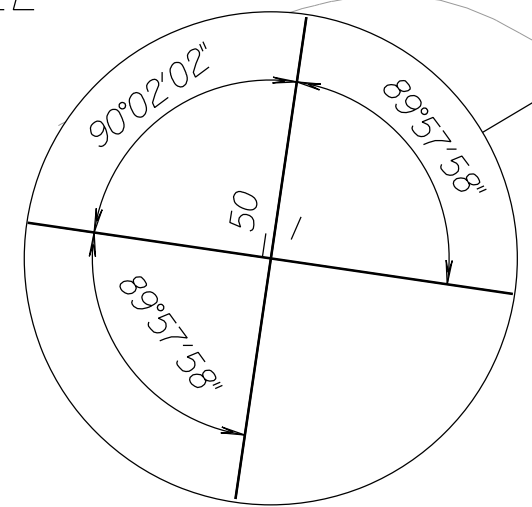
Sta. 277+99.50, 27.68' Rt. Install
 4' x 4' Setback Curb Inlet

Sta. 282+16.00, 26.50' Rt. Install
 4' x 4' Setback Curb Inlet

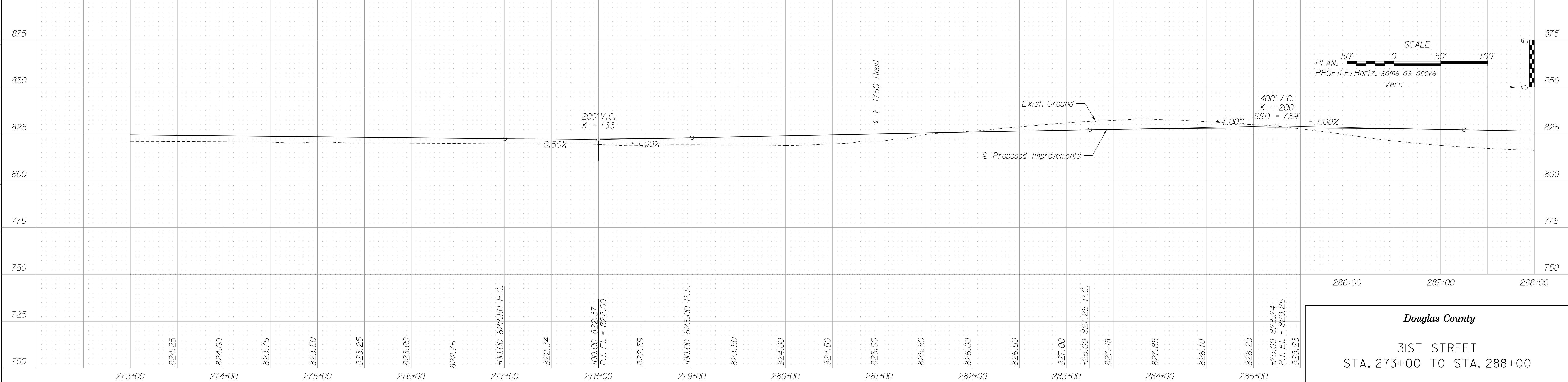
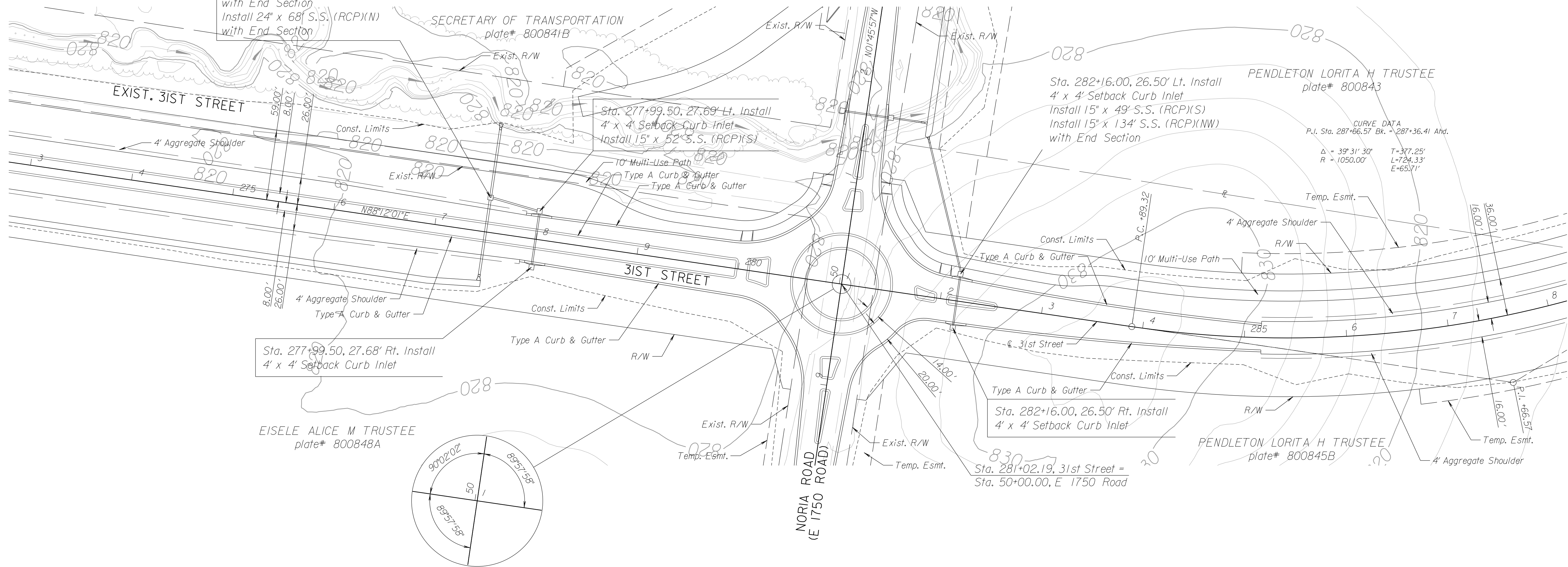
Sta. 281+02.19, 31st Street =
 Sta. 50+00.00, E 1750 Road

EISELE ALICE M TRUSTEE
 plate# 800848A

PENDLETON LORITA H TRUSTEE
 plate# 800845B



NORIA ROAD
 (E 1750 ROAD)

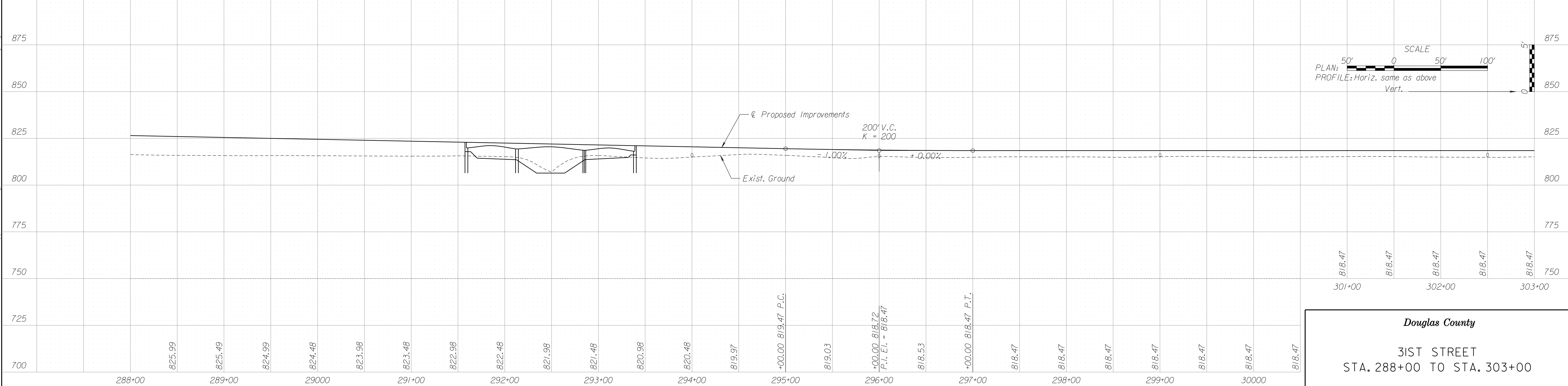
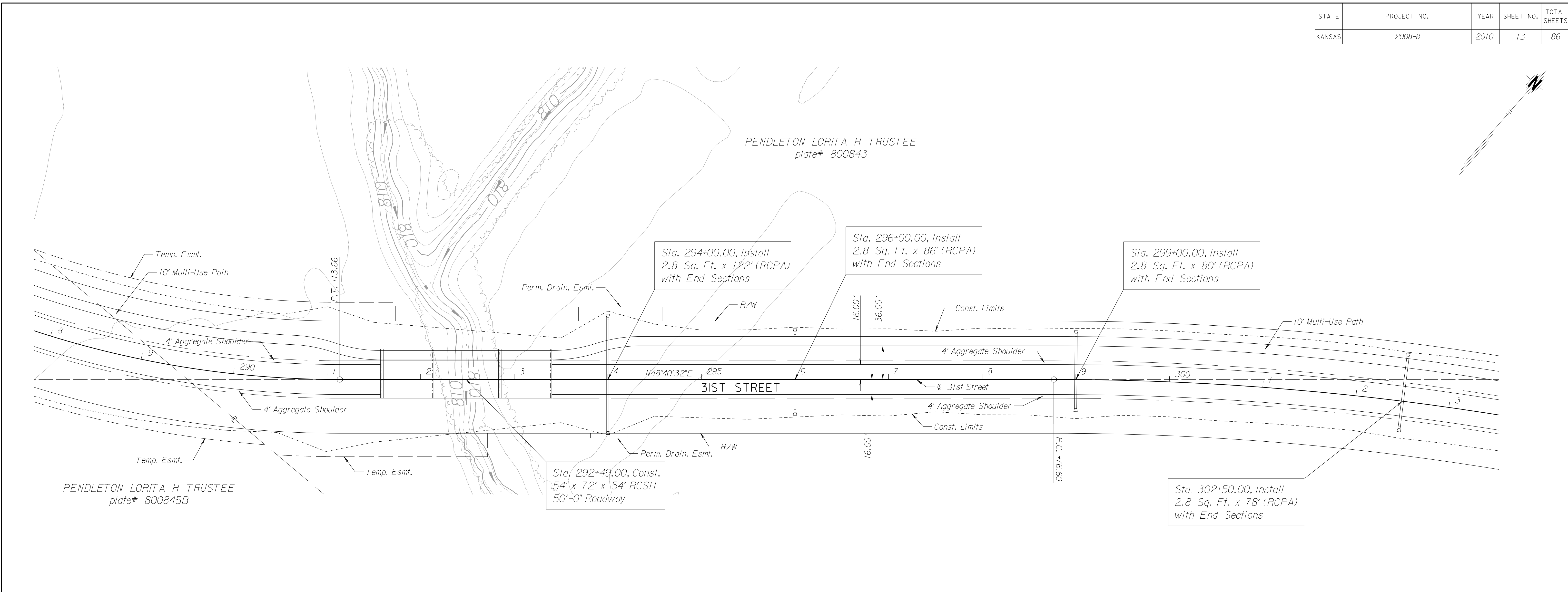
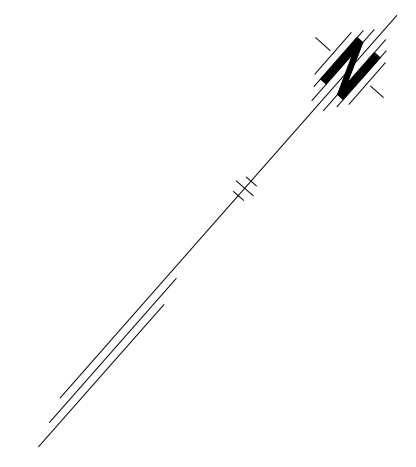


Douglas County

31ST STREET
 STA. 273+00 TO STA. 288+00

File: MATR08-00-451-00-CADD\DEF\SIGN\031E-27300.dwg Date: 7/6/2010 Time: 8:56:17 AM By: ml.bowers

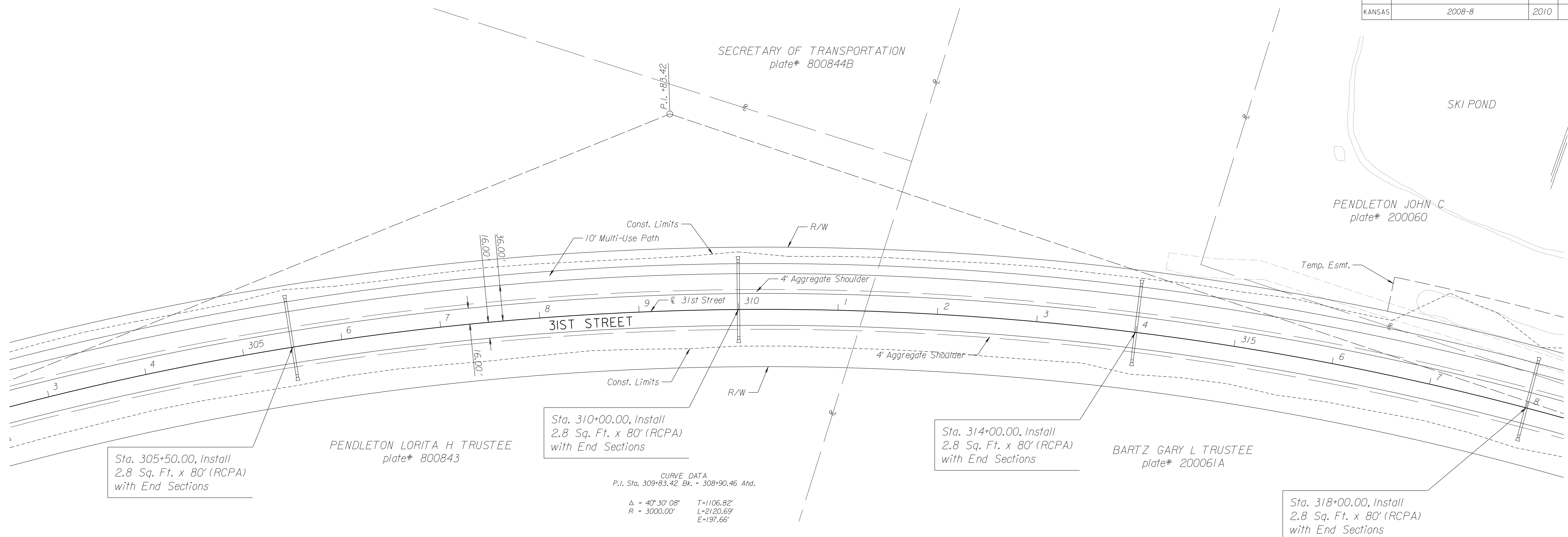
| STATE | PROJECT NO. | YEAR | SHEET NO. | TOTAL SHEETS |
|--------|-------------|------|-----------|--------------|
| KANSAS | 2008-8 | 2010 | 13 | 86 |



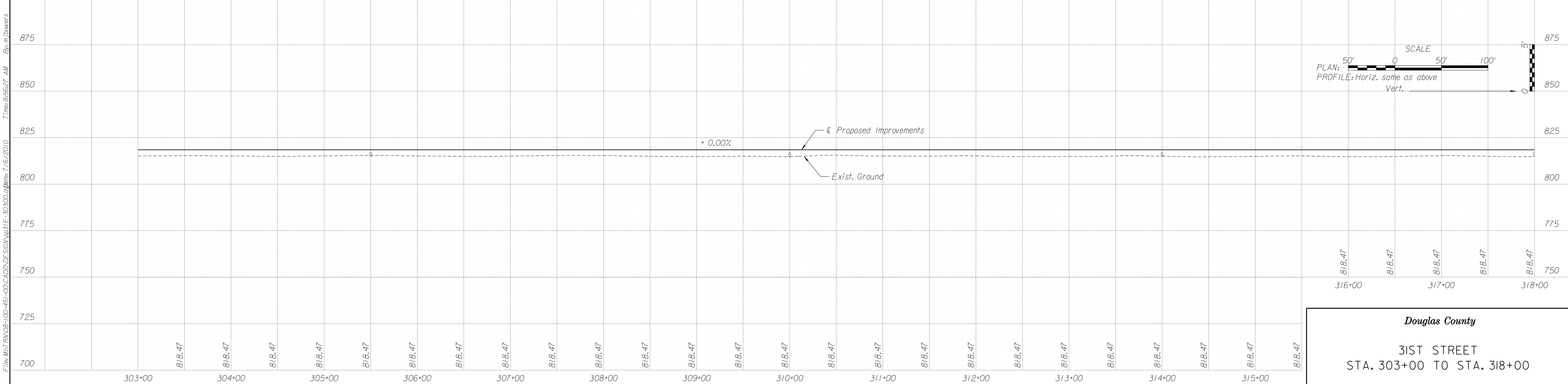
Douglas County
31ST STREET
STA. 288+00 TO STA. 303+00

File: MATRIN08-00-451-00\CADD\DESIGN\031E-28500.dwg, Date: 7/6/2010, Time: 8:56:22 AM, By: mlowers

| STATE | PROJECT NO. | YEAR | SHEET NO. | TOTAL SHEETS |
|--------|-------------|------|-----------|--------------|
| KANSAS | 2008-8 | 2010 | 14 | 86 |

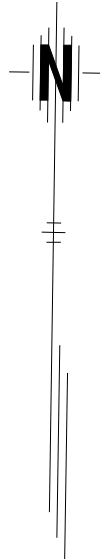


CURVE DATA
P.I. Sta. 309+83.42 BK. = 308+90.46 Ahd.
Δ = 40° 30' 08" T = 1106.82'
R = 3000.00' L = 2120.69'
E = 197.66'

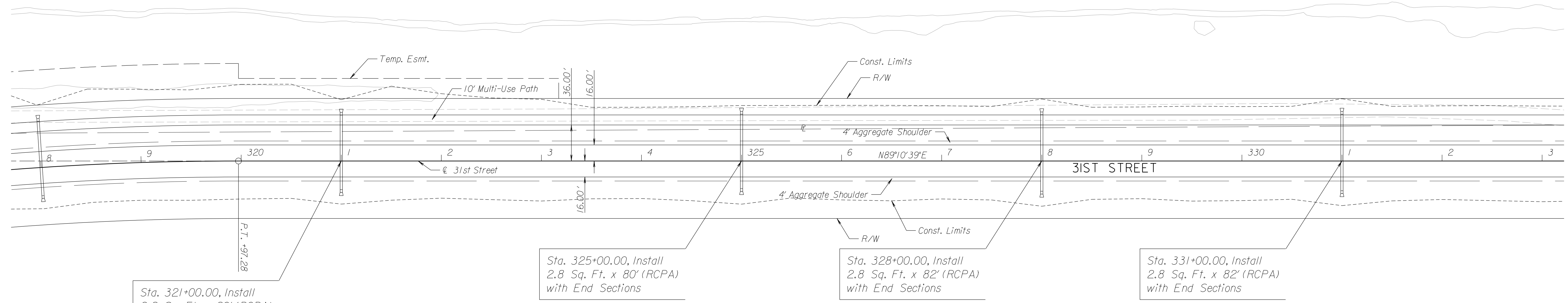


File: MATRIN08-00-45-00-CADD\DEF\SIGN\031E-30300.dwg Date: 7/6/2010 Time: 8:56:27 AM By: mlbowers

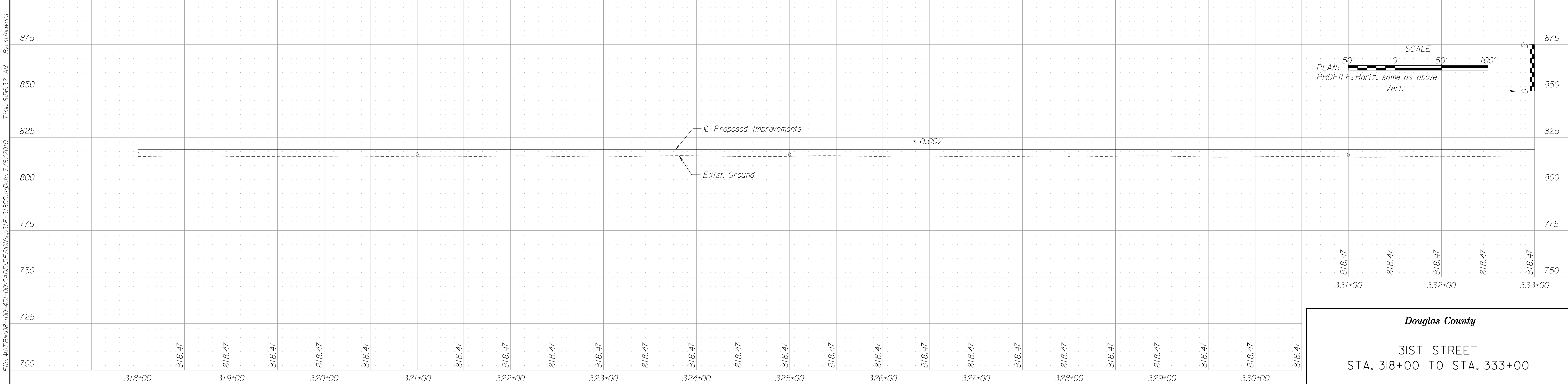
| STATE | PROJECT NO. | YEAR | SHEET NO. | TOTAL SHEETS |
|--------|-------------|------|-----------|--------------|
| KANSAS | 2008-8 | 2010 | 15 | 86 |



SKI POND
 PENDLETON JOHN C
 plate# 200060

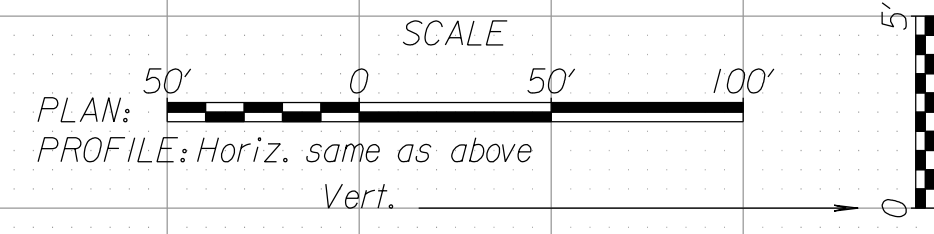
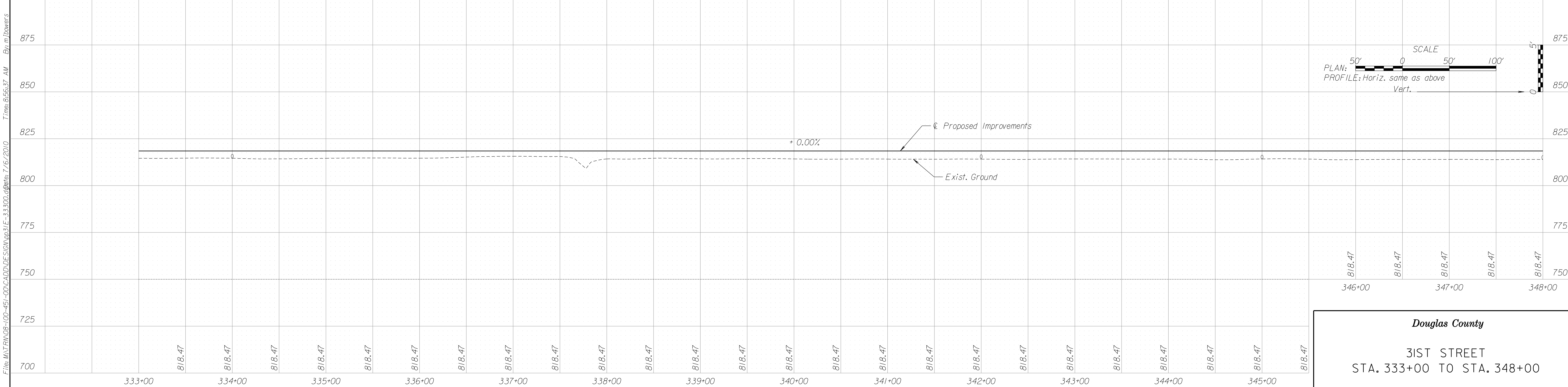
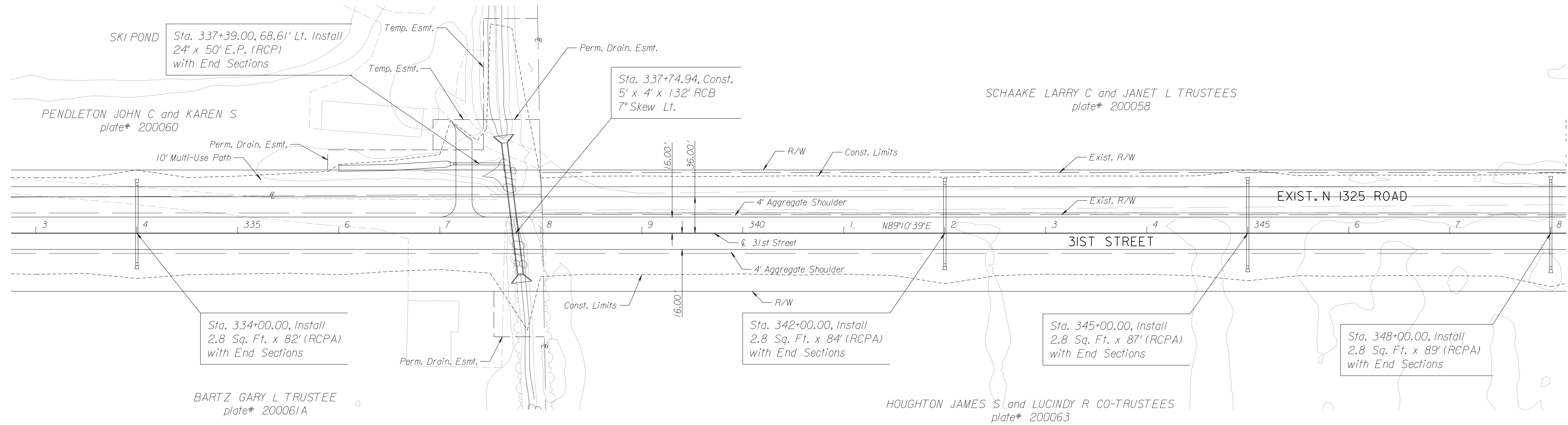


BARTZ GARY L TRUSTEE
 plate# 200061A



File: MATRIN08-00-451-00\CADD\DESIGN\031E-31800.dwg Date: 7/6/2010 Time: 8:56:32 AM By: mlowers

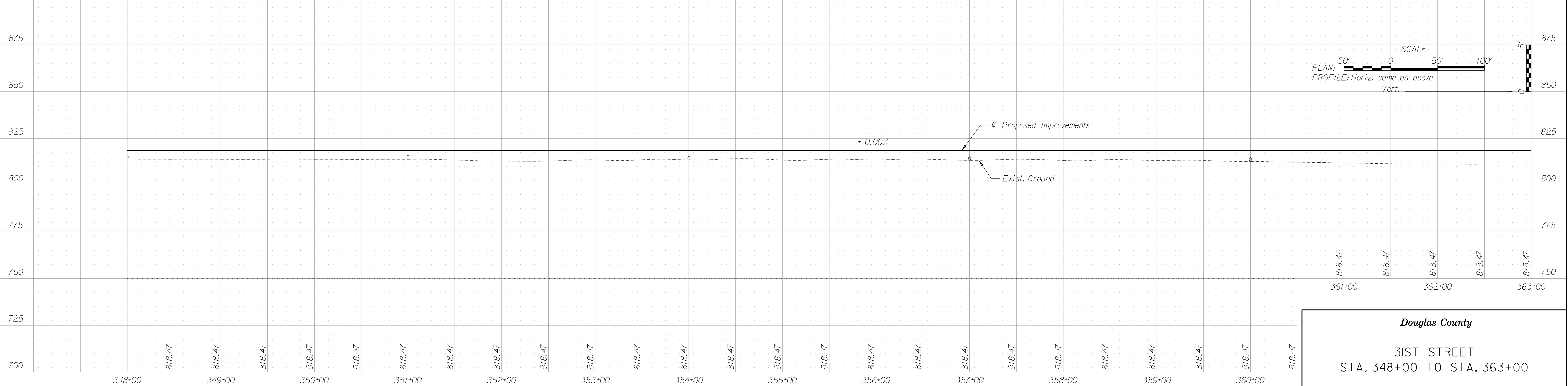
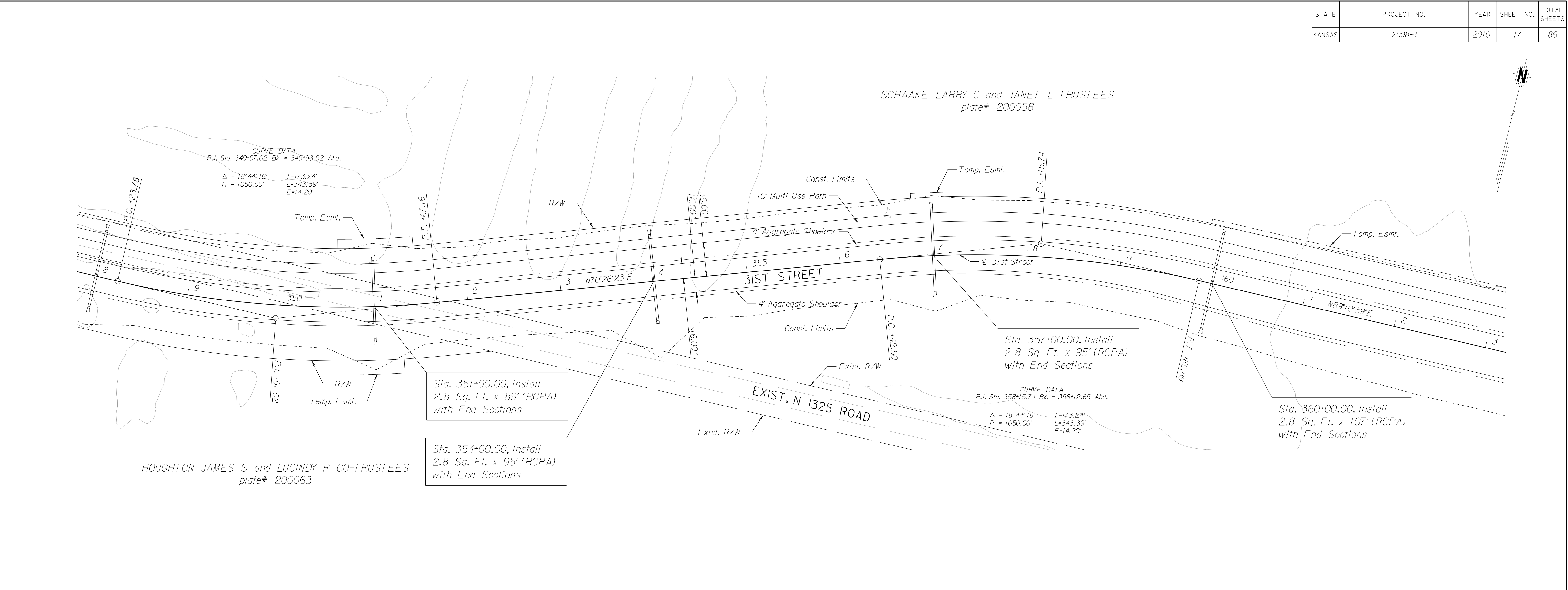
| STATE | PROJECT NO. | YEAR | SHEET NO. | TOTAL SHEETS |
|--------|-------------|------|-----------|--------------|
| KANSAS | 2008-8 | 2010 | 16 | 86 |



Douglas County
31ST STREET
STA. 333+00 TO STA. 348+00

File: MATRIN08-00-451-00-CADD\DESIGN\031E-33300.dwg Date: 7/6/2010 Time: 8:56:37 AM By: mlowers

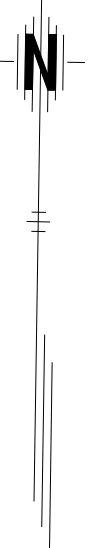
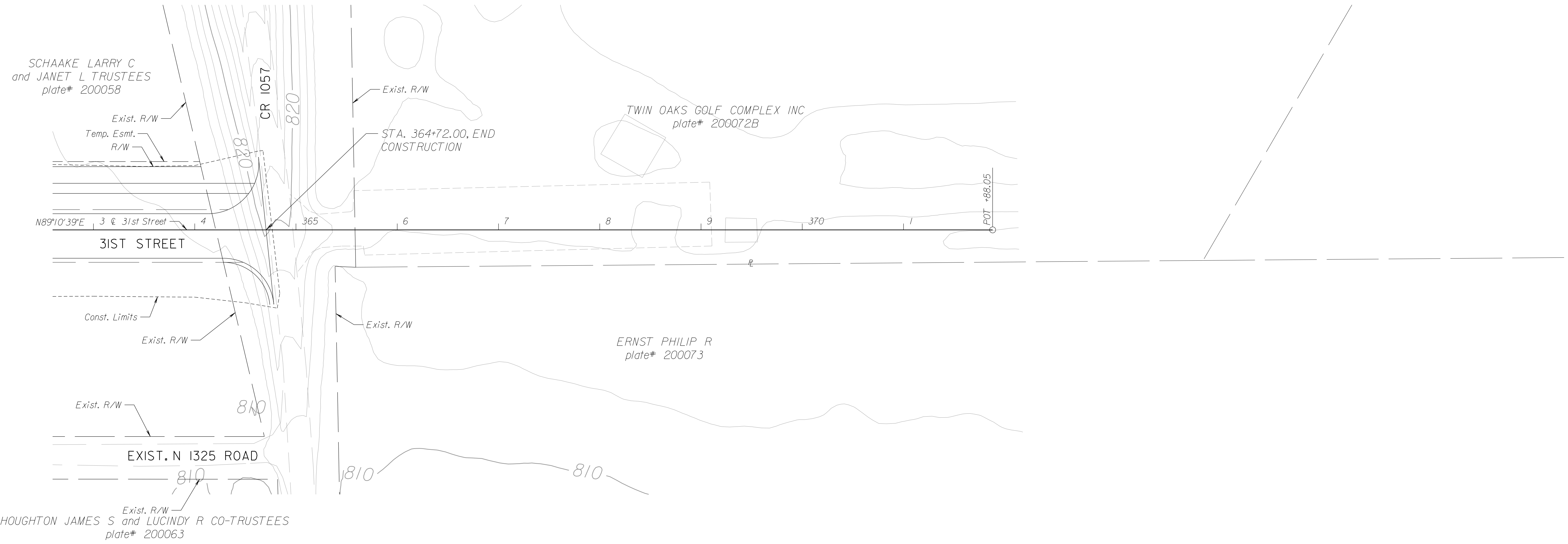
| STATE | PROJECT NO. | YEAR | SHEET NO. | TOTAL SHEETS |
|--------|-------------|------|-----------|--------------|
| KANSAS | 2008-8 | 2010 | 17 | 86 |



Douglas County
31ST STREET
STA. 348+00 TO STA. 363+00

File: MATRIN08-00-451-00-CADD\DEF\SIGN\031E-34800.dwg Date: 7/6/2010 Time: 8:56:42 AM By: mlowers

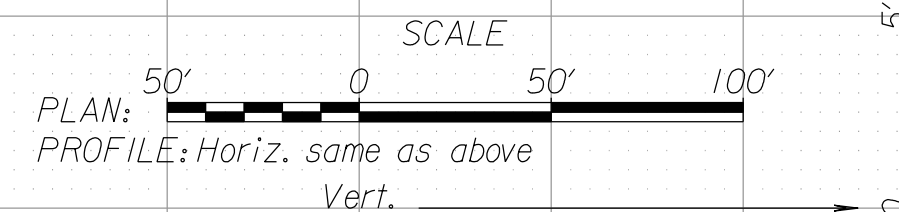
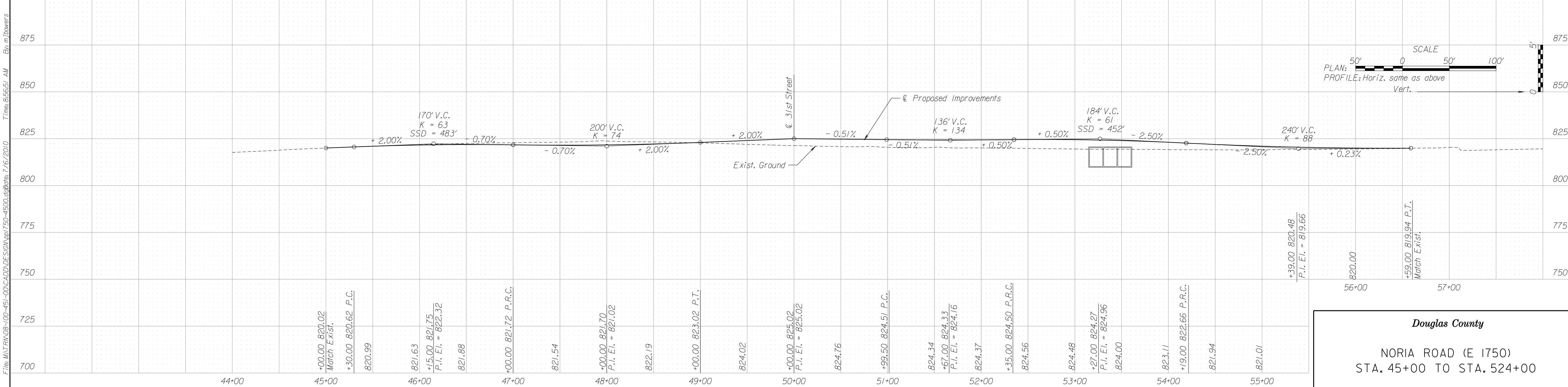
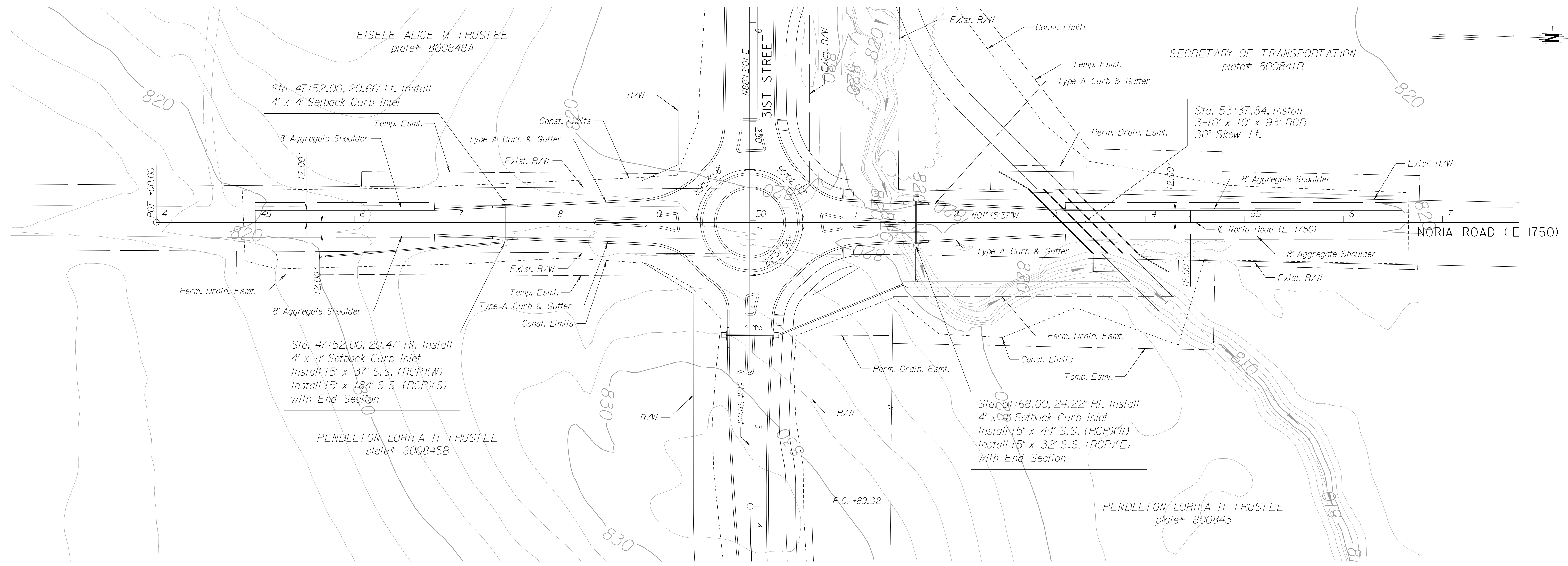
| STATE | PROJECT NO. | YEAR | SHEET NO. | TOTAL SHEETS |
|--------|-------------|------|-----------|--------------|
| KANSAS | 2008-8 | 2010 | 18 | 86 |



Douglas County
31ST STREET
STA. 363+00 TO STA. 364+72

File: MATRIN08-00-451-00-CADD\DE SIGN\031E-36300.dwg Date: 7/6/2010 Time: 8:56:46 AM By: mlowers

| STATE | PROJECT NO. | YEAR | SHEET NO. | TOTAL SHEETS |
|--------|-------------|------|-----------|--------------|
| KANSAS | 2008-8 | 2010 | 19 | 86 |



Douglas County
 NORIA ROAD (E 1750)
 STA. 45+00 TO STA. 524+00

File: MATRIN08-00-451-00\CADD\DESIGN\750-4500.dwg Date: 7/6/2010 Time: 8:56:51 AM By: ml.bowers