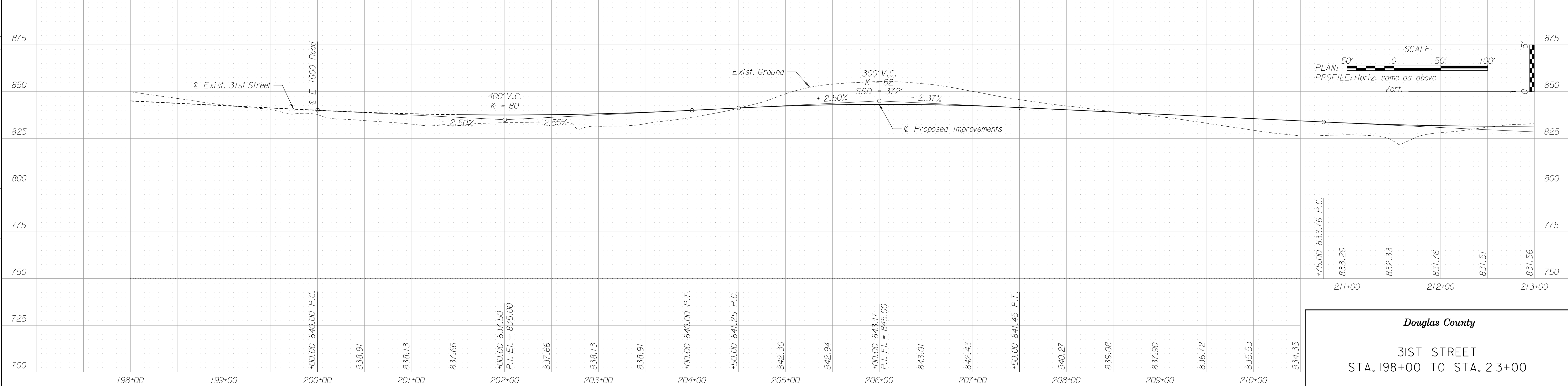
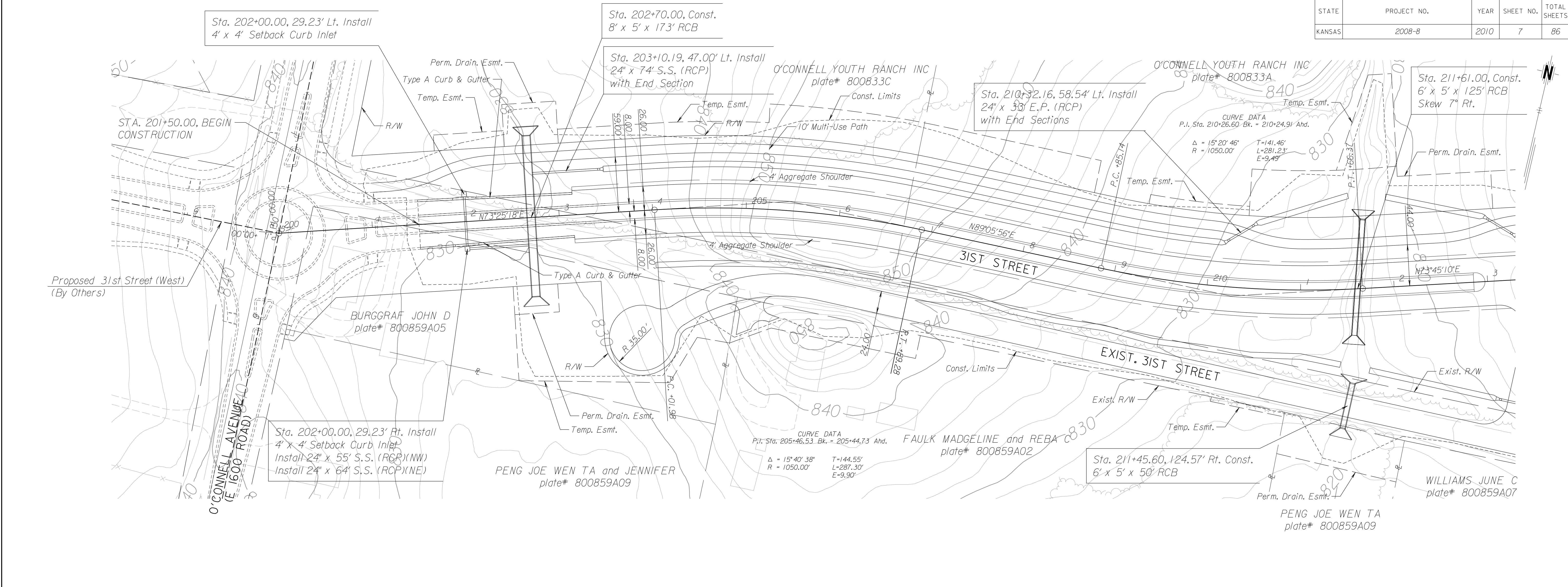


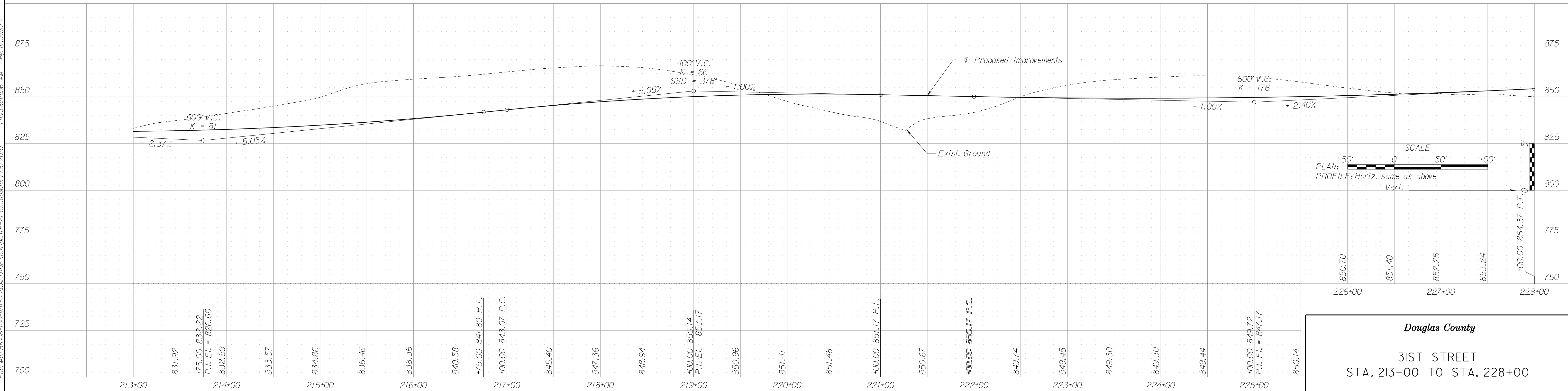
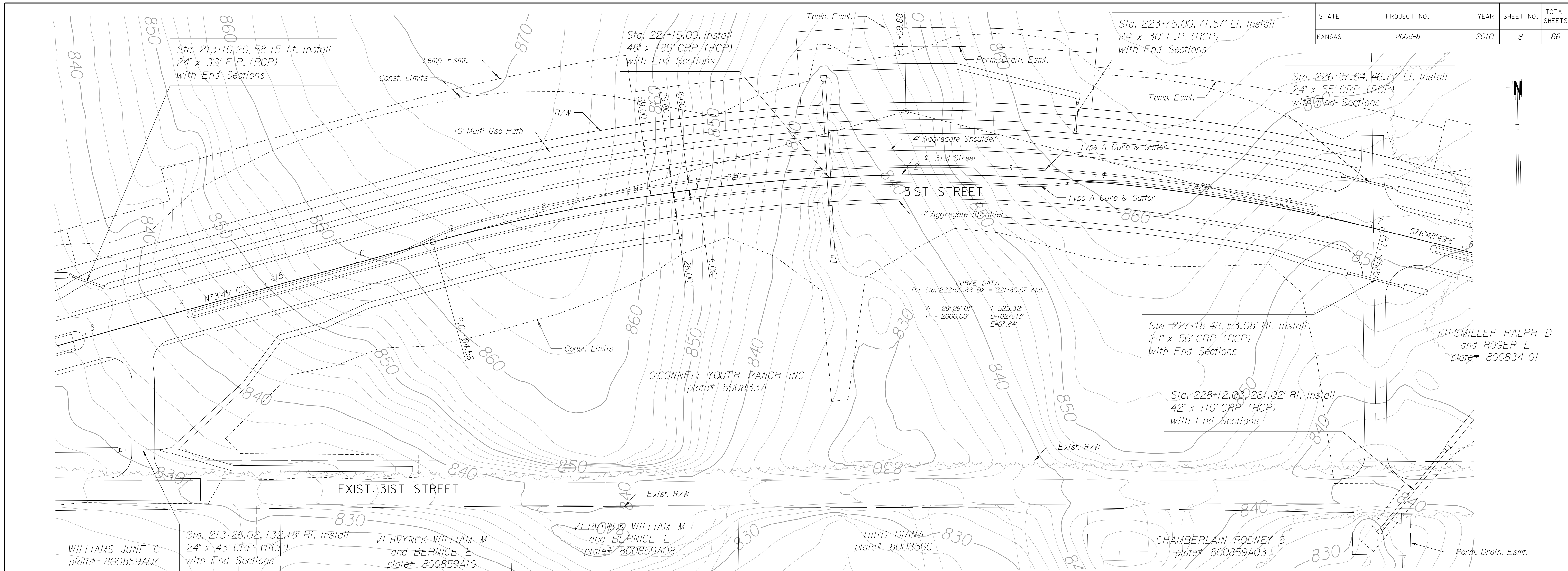
STATE	PROJECT NO.	YEAR	SHEET NO.	TOTAL SHEETS
KANSAS	2008-8	2010	7	86



Douglas County
31ST STREET
STA. 198+00 TO STA. 213+00

File: MATRIN08-00-451-00\CADD\DESIGN\031E-20000.dwg Date: 7/6/2010 Time: 8:55:51 AM By: ml.bowers

STATE	PROJECT NO.	YEAR	SHEET NO.	TOTAL SHEETS
KANSAS	2008-8	2010	8	86



Douglas County
31ST STREET
STA. 213+00 TO STA. 228+00

File: MATR08-00-451-00-CADD\DESIGN\031E-21300.dwg Date: 7/6/2010 Time: 8:55:56 AM By: ml.bowers

STATE	PROJECT NO.	YEAR	SHEET NO.	TOTAL SHEETS
KANSAS	2008-8	2010	9	86

Sta. 229+33.00, Install
42" x 182' CRP (RCP)
with End Sections
25° Skew Rt.

Sta. 240+85.12, 47.00' Lt. Install
24" x 25' CRP (RCP)
with End Sections

Sta. 243+00.00, 47.00' Lt. Install
4' x 4' Grate Inlet
Install 24" x 102' S.S. (RCP)(S)

CURVE DATA
P.I. Sta. 234+39.01 Bk. = 234+34.79 Ahd.
 $\Delta = 20^\circ 46' 10"$ $T = 192.42'$
 $R = 1050.00'$ $L = 380.62'$
 $E = 17.49'$

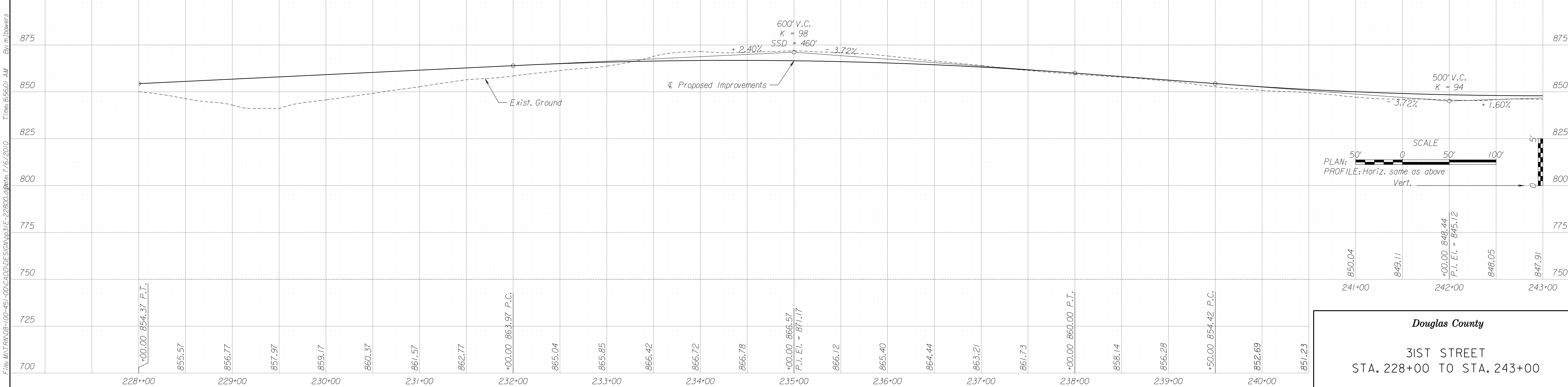
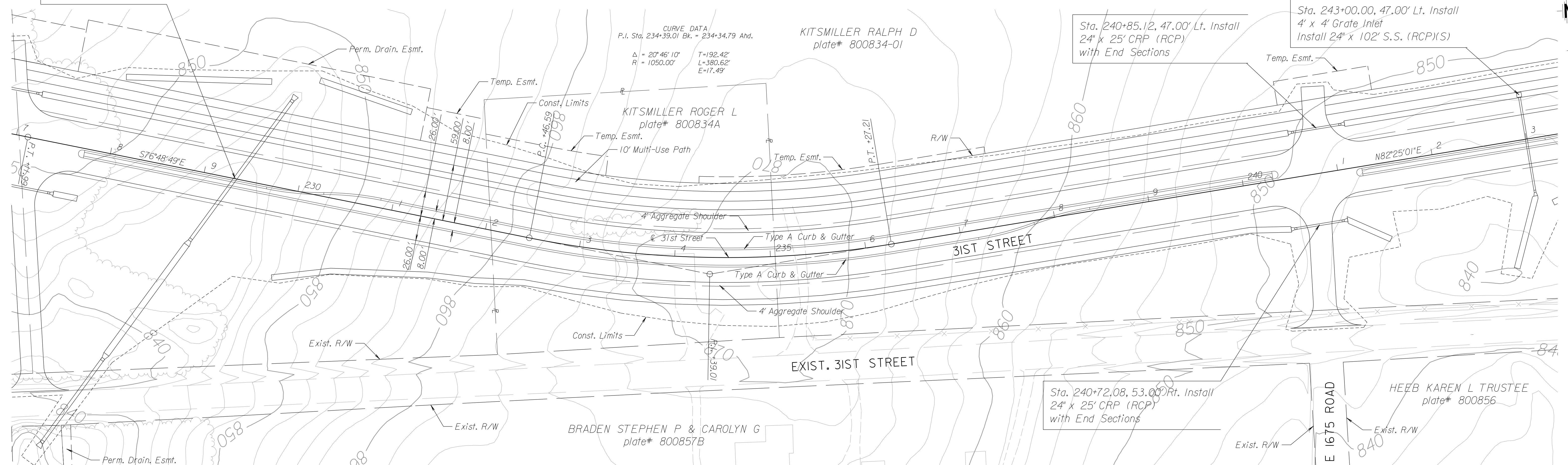
KITSMILLER RALPH D
plate# 800834-01

KITSMILLER ROGER L
plate# 800834A

Sta. 240+72.08, 53.00' Rt. Install
24" x 25' CRP (RCP)
with End Sections

HEEB KAREN L TRUSTEE
plate# 800856

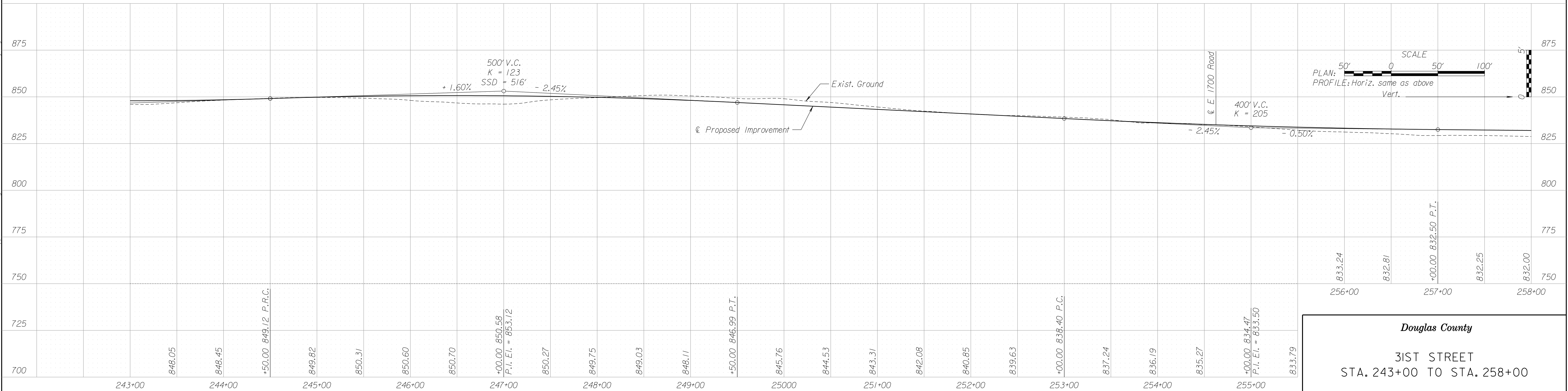
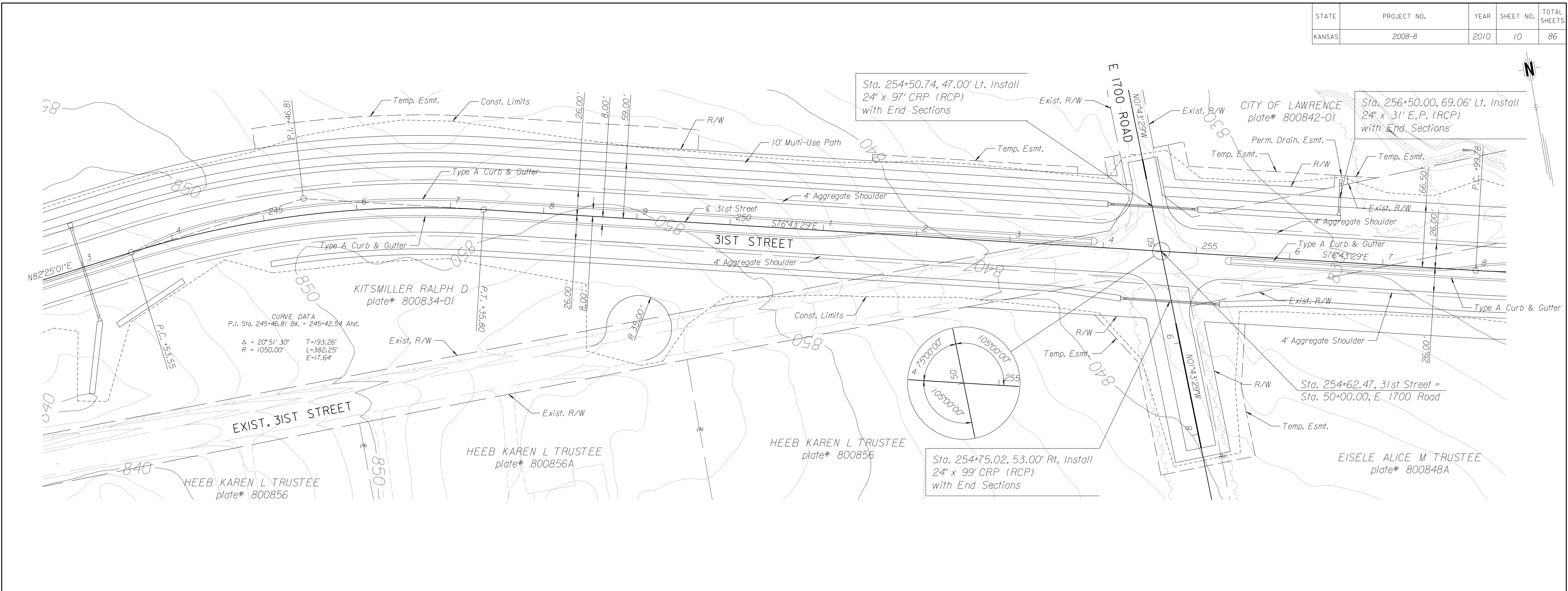
BRADEN STEPHEN P & CAROLYN G
plate# 800857B



SCALE
50' 0 50' 100'
PLAN: Horiz. same as above
PROFILE: Horiz. same as above
Vert.

Douglas County
31st STREET
STA. 228+00 TO STA. 243+00

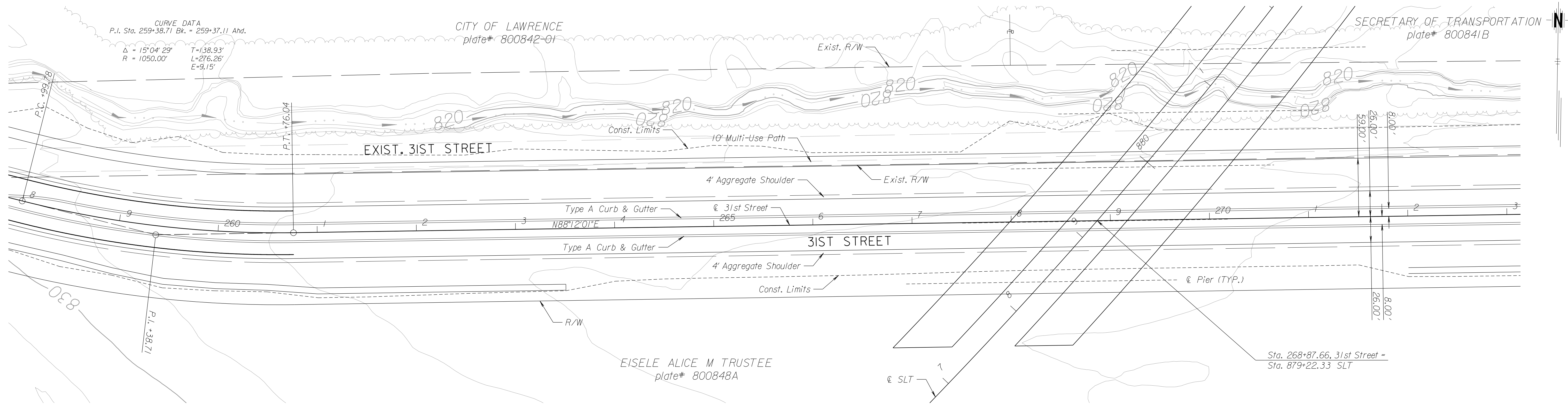
STATE	PROJECT NO.	YEAR	SHEET NO.	TOTAL SHEETS
KANSAS	2008-8	2010	10	86



Douglas County
31ST STREET
STA. 243+00 TO STA. 258+00

File: MATR08-00-45-00-CADD\DESIGN\031E-24300.dwg Date: 7/6/2010 Time: 8:56:07 AM By: mlowers

STATE	PROJECT NO.	YEAR	SHEET NO.	TOTAL SHEETS
KANSAS	2008-8	2010	11	86



STATE	PROJECT NO.	YEAR	SHEET NO.	TOTAL SHEETS
KANSAS	2008-8	2010	12	86

Sta. 277+50.00, 34.00' Lt. Install
 4' x 4' Junction Box
 Install 18" x 46' S.S. (RCP)(SE)
 Install 24" x 77' S.S. (RCP)(S)
 with End Section
 Install 24" x 68' S.S. (RCP)(N)
 with End Section

SECRETARY OF TRANSPORTATION
 plate# 800841B

PENDLETON LORITA H TRUSTEE
 plate# 800843

Sta. 282+16.00, 26.50' Lt. Install
 4' x 4' Setback Curb Inlet
 Install 15" x 49' S.S. (RCP)(S)
 Install 15" x 134' S.S. (RCP)(NW)
 with End Section

CURVE DATA
 P.I. Sta. 287+66.57 Bk. - 287+36.41 Ahd.
 $\Delta = 39^{\circ}31'30"$ T=377.25'
 R = 1050.00' L=724.33'
 E=65.71'

Sta. 277+99.50, 27.69' Lt. Install
 4' x 4' Setback Curb Inlet
 Install 15" x 52' S.S. (RCP)(S)

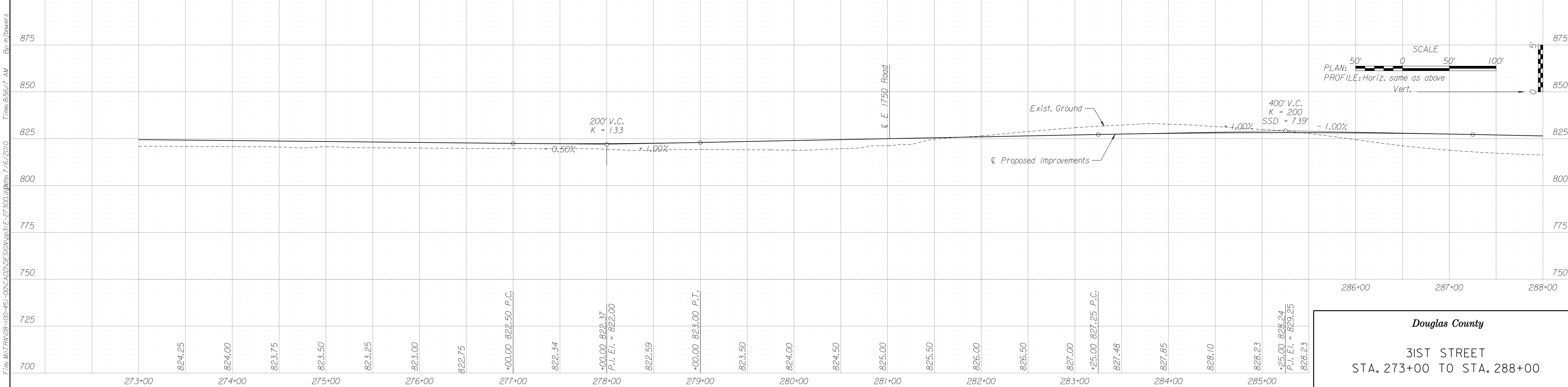
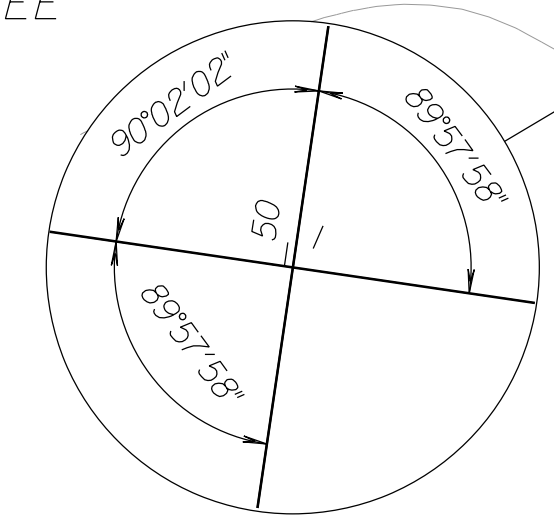
Sta. 277+99.50, 27.68' Rt. Install
 4' x 4' Setback Curb Inlet

Sta. 282+16.00, 26.50' Rt. Install
 4' x 4' Setback Curb Inlet

Sta. 281+02.19, 31st Street =
 Sta. 50+00.00, E 1750 Road

EISELE ALICE M TRUSTEE
 plate# 800848A

PENDLETON LORITA H TRUSTEE
 plate# 800845B



Douglas County
 31ST STREET
 STA. 273+00 TO STA. 288+00

File: MATR08-00-451-00-CADD\DEF\SIGN\031E-27300.dwg Date: 7/6/2010 Time: 8:56:17 AM By: ml.bowers